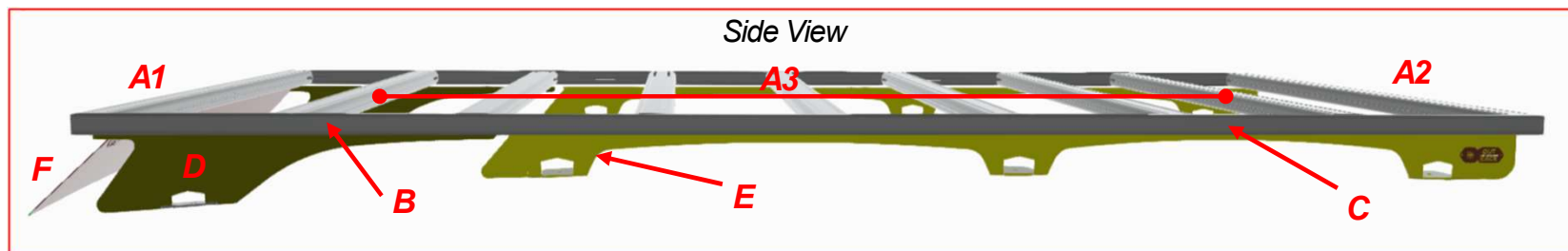
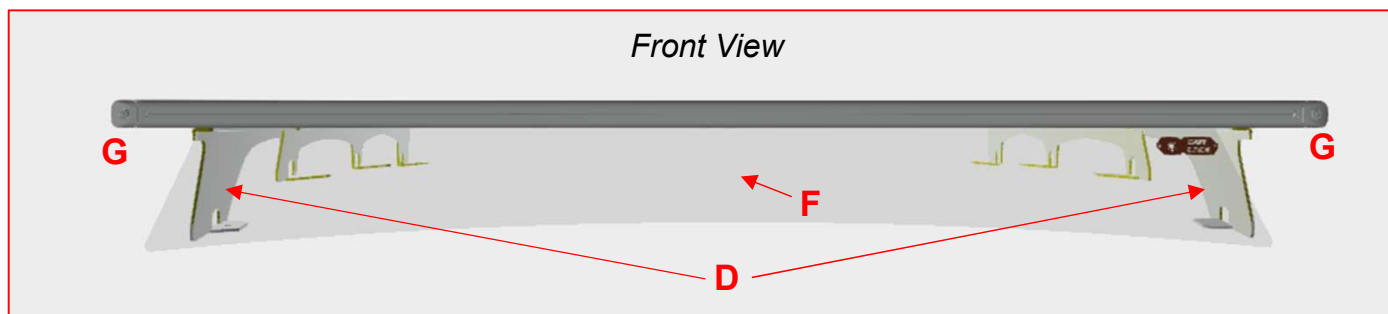


Thank you for purchasing the Out - Rack Ultra Slim roof rack.

The roof rack was developed to give you the maximum in flexibility of use while maintaining the best characteristics of lightness and strength. The dimensions of the loading floor are 2160 x 1305mm (85.03" x 51.38") but if it is needed, the rack can be quickly converted to the short 1560mm version (61.42") that installs only on the rails.

All side bars and crossbars are equipped with slots into which standard M6 bolts can be inserted so that you can attach any type of accessory in the position you want.

As you will see below, we suggest a standard distribution of the load bars, but they can also be installed freely according to your needs.



### Kit Contents :

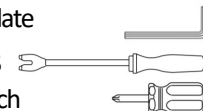
- x1 - front crossbar - **A1**
- x1 - rear crossbar - **A2**
- x7 - loading crossbars - **A3**
- x2 - short side bars - **B**
- x2 - long side bars - **C**
- x2 - front brackets - **D**
- x2 - rear brackets - **E**
- x1 - wind deflector – **F**
- x4 - end caps **G**
- x4 - 100mm linear joint
- x4 - M6 button head screws
- x44 - M6 stop locking nuts
- x44 - M6 bolts
- x6 - M6 Stainless steel washers
- x8 - Custom rubber washer
- x6 - M8 rail plates
- x6 - M8 stop locking nuts
- x2 - M8 spacers
- x2 - M8 Hexagon socket screw
- x8 - M8 stop locking nuts caps
- x4 - M6 eye bolts

### Tools included

- 3mm rounded allen wrench
- x1 - drilling template

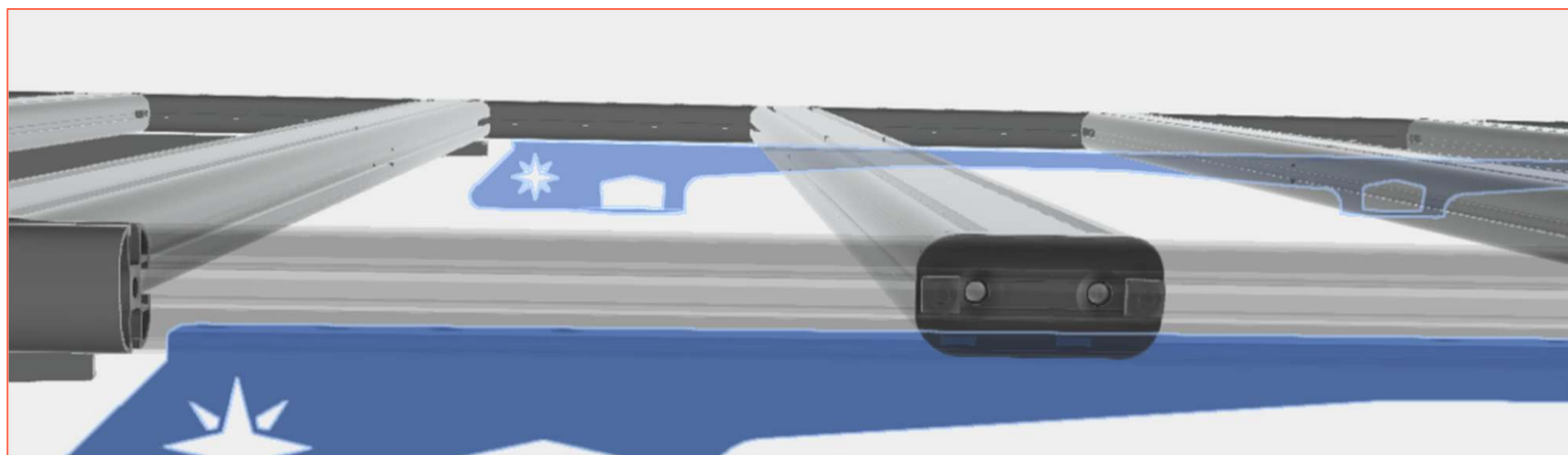
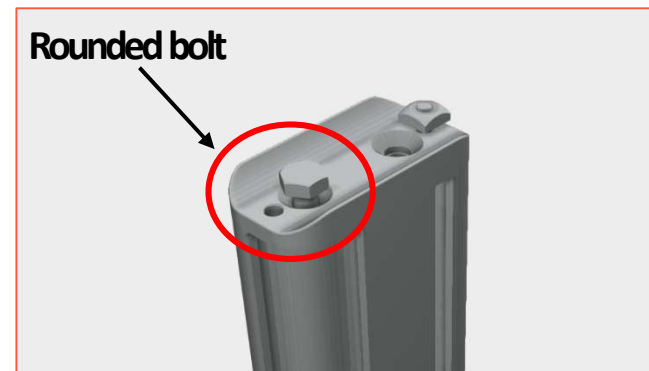
### Required tools

- 4mm allen wrench
- 5mm allen wrench
- 13mm spanner
- 10mm spanner
- Drill and 4mm bit
- Conical cutter or 16mm bit
- Sealant

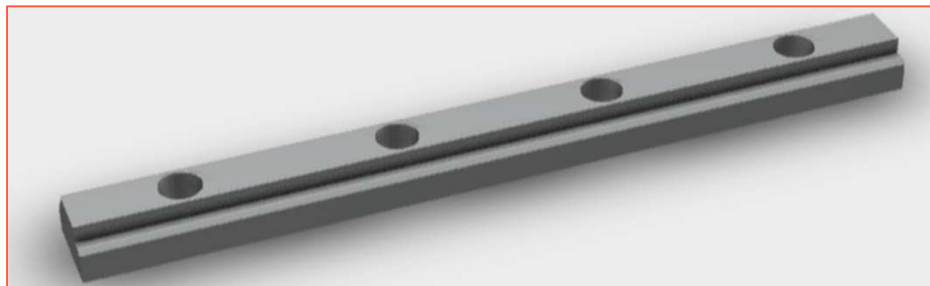


## PART #1 - LOADING FLOOR ASSEMBLY

1. Slightly unscrew the square nuts of the loading crossbars **A1**; **A2** and **A3**, taking care not to unscrew them completely;
2. Align the crossbars in this order: **A1 - A3 (x7) - A2**. Crossbars **A1** and **A2** should be placed with the rounded bolt on the opposite side of bars **A3**;
3. Take the **C** long side bar and slide it over the side of the crossbars so that the nut fits into the profile T-slot. Keep external the side without T-slot. Same procedure on the opposite side with the other **C** side bar;



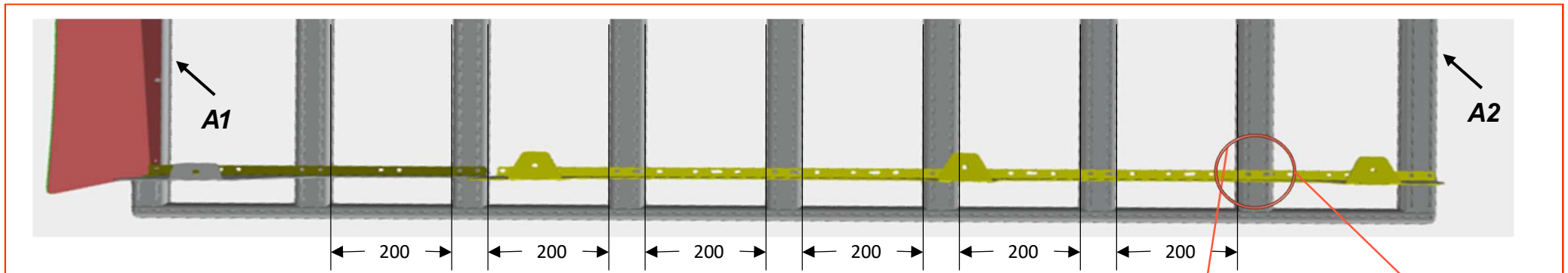
4. Take the short side bar **B** and join it to the previous long side bar **C** using the 100mm linear joints provided. Then insert the joints into the upper and lower t-slots of the two bars, align them and using the 3mm Allen wrench tighten them. Repeat the procedure for the opposite side;



5. Using the 4mm Allen wrench, install the **G** end caps at the 4 corners of the rack;

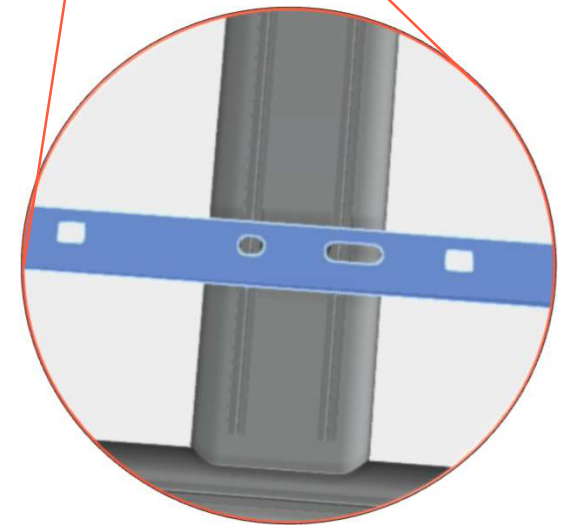


- Slide the crossbars along the side bars and distribute them as needed. As anticipated on the first page, for standard use compatible with all Out-Rack accessories, it is recommended that the **A3** bars be placed 200mm apart;



- Using the supplied 3mm rounded Allen wrench, tighten the visible socket head screw in the slots of the first (**A1**) and last (**A2**) load bar;

At this point the assembly of the loading floor is completed. The screws of the **A3** crossbar slots will be tightened at the end of the rack installation.

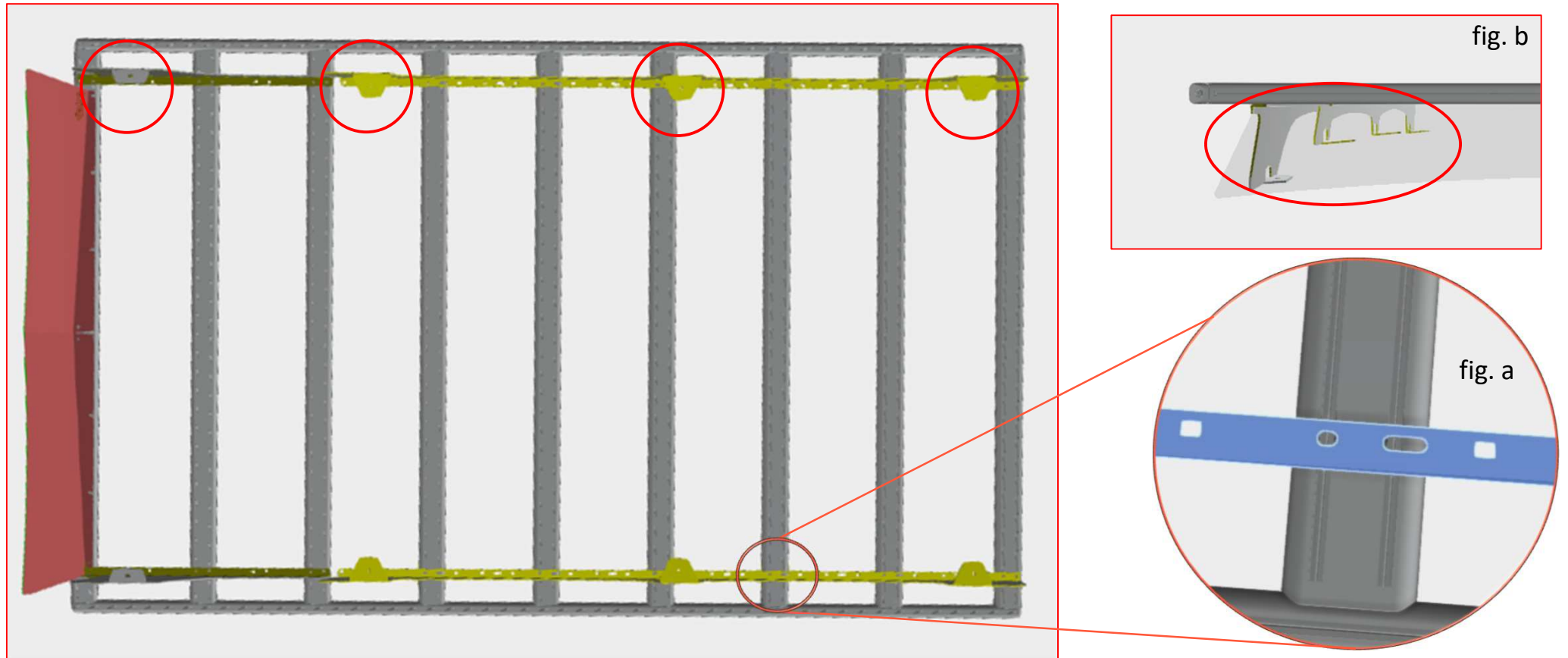


## PART #2 - BRACKETS INSTALLATION

1. Insert 2 M6x14 bolts into each T-slot of the crossbars and using M6 self-locking nuts assemble front brackets **D** and rear brackets **E** as shown. If using standard spacing, use the two rounded slots in the rear brackets (fig. a). The square hole will be used in case you want to shorten the rack in its version from 1560mm.

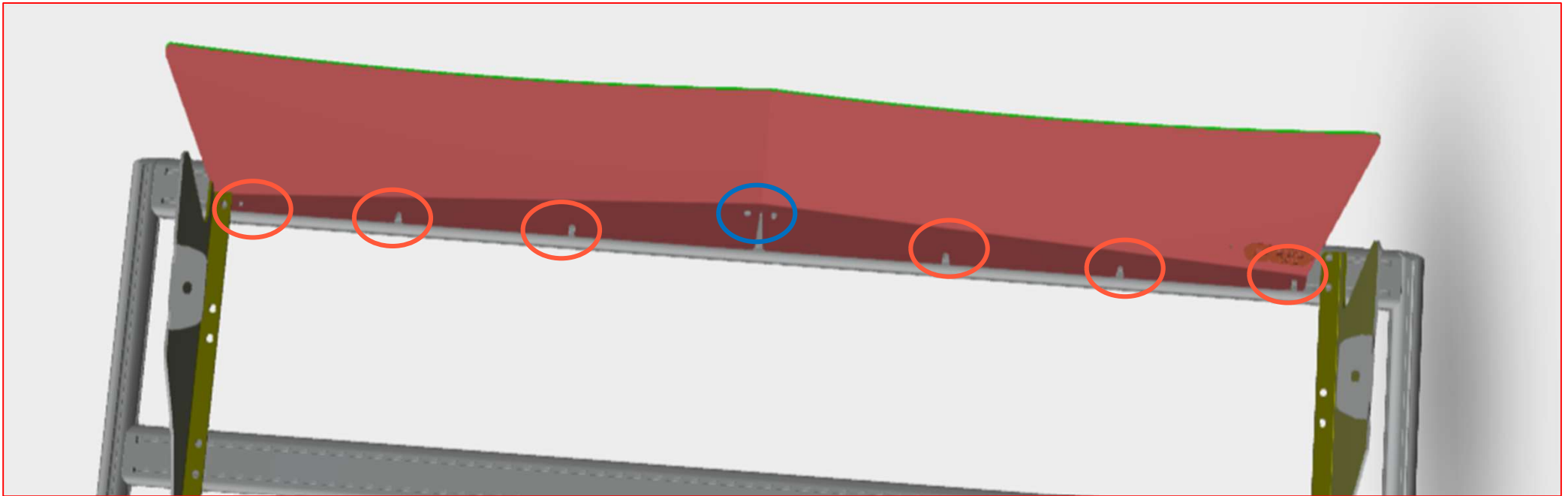
**NOTE:**

- The front brackets should be placed where the short side bars are
- The feet of the brackets should be positioned toward the inside of the rack (fig. b)



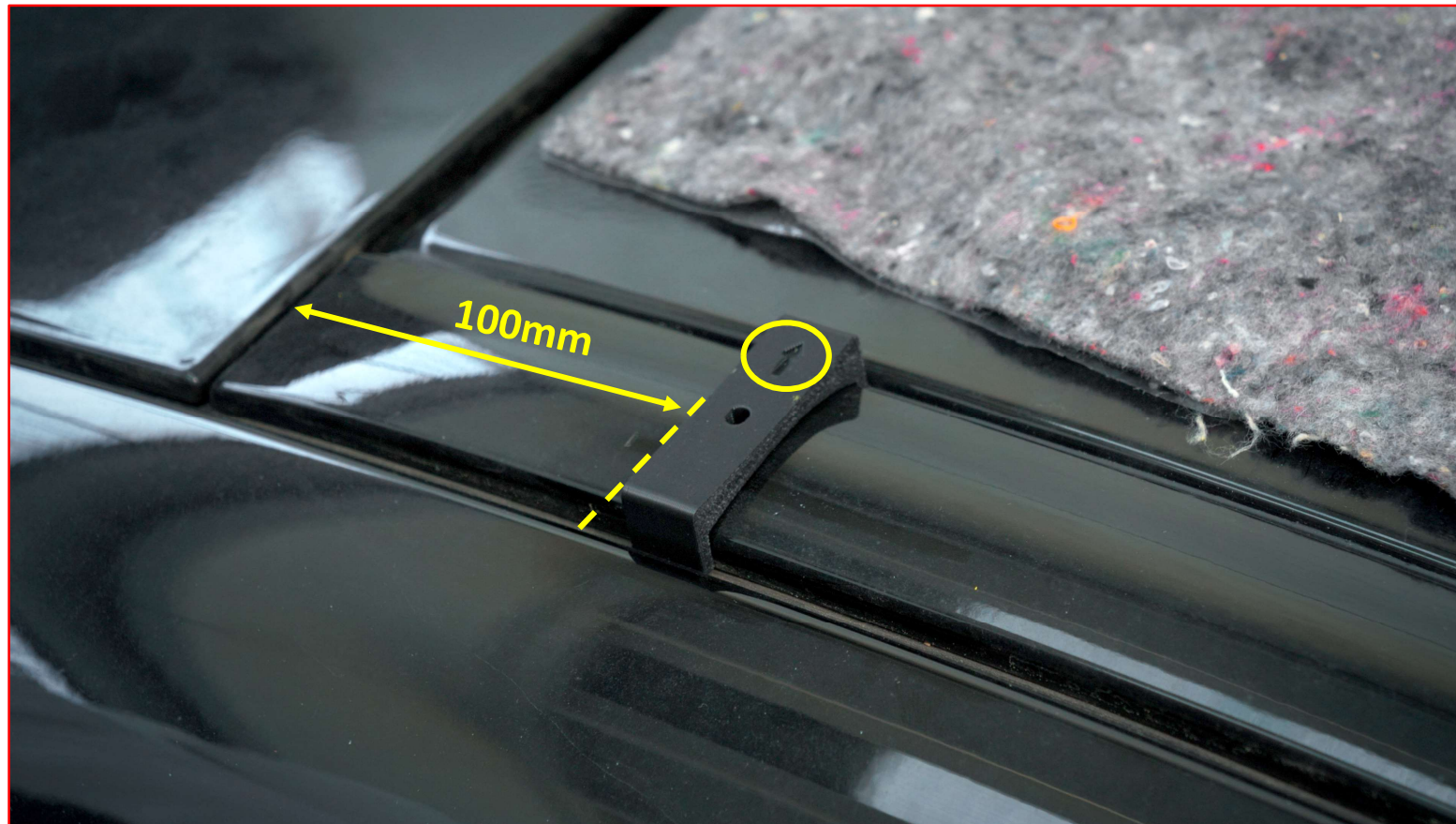
## PART #3 - WIND FAIRING INSTALLATION

1. Insert 6 M6x14 bolts into the innermost slot of the first load bar **A1** and **A2** into the outer slot;
2. Align bolts and wind fairing in the center using the bar hole used to insert the bolts as a reference;
3. Insert M6 washers into the bolts marked in red and tighten using M6 self-locking nuts. Bolts marked in blue can only be tightened with nuts; washers are not required.



## PART #4 – VEHICLE PREPARATION

1. Place the supplied hole template on the front of the rail, as shown in the picture. The arrow  $\uparrow$  should be in the direction of the center of the vehicle;
2. Position it 100mm between the beginning of the track and the beginning of the template;
3. Drill through the hole in the template itself with the 4mm drill bit;



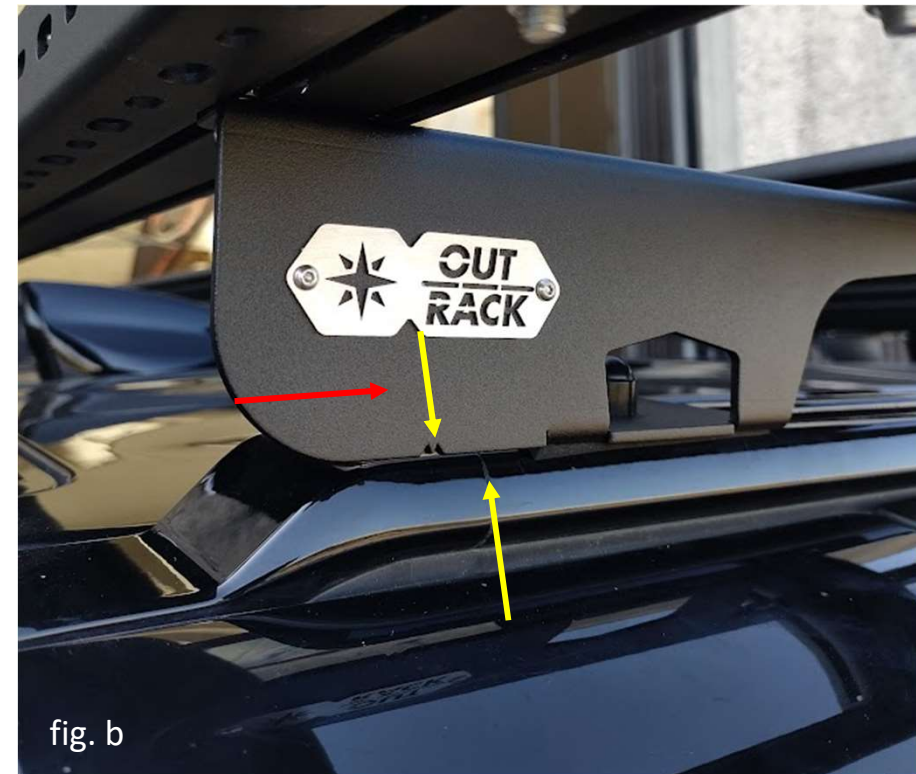
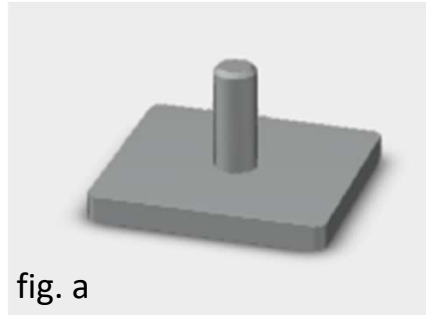
4. Using the conical cutter or 16mm drill bit, gently enlarge the hole;
5. Using the T35 torx wrench, unscrew and remove the bolt present under the rail;
6. Insert the supplied M8 spacer into the hole.





## PART #5 – ROOF RACK INSTALLATION

1. Insert 3 inserts into each rail (fig. a);
2. Position them approximately where the feet of the rack brackets will be placed and put the large gaskets for future protection of the rail;
3. The small gaskets should be used for the front attachment, where you have previously drilled the rail;
4. Place the roof rack on the car by inserting the holes of the bracket feet into the pins of the inserts and, if necessary, slide it forward or backward so that the reference notch on the rear bracket coincides with the end of the rail (fig. b);



5. Using the M8 self-locking nuts, screw the rear brackets to the inserts inserted in the rails;
6. Using the two M8 cap screws attach the front brackets. CAUTION put a little sealant on the screw thread;
7. Cover the nuts and screws with the black caps provided;
8. Make sure the rack is centered laterally;
9. Using the 10mm wrench tighten all bolts that attach brackets **D** and **E** to load bars **A1**; **A2** and **A3**;
10. Using the 3mm Allen wrench with the rounded tip tighten all the bolts in the slots of the **Ax** load bars so that bars B and C are secured

**Congratulations!**

**Your new Out-Rack is now fully installed and fully operational!**



**CAUTION** to prevent loosening we use self-locking nuts but still periodically check that all screws are tightened



On our site you can find many accessories to turn your Out-Rack rack into a complete cargo system perfect for your needs. Not enough? Need a customized solution? Don't hesitate to contact us!

For further information email us to: [info@ou-rack.com](mailto:info@ou-rack.com)

