

Congratulations on your purchase!

With this kit you can easily install your new tactical panel for your Land Rover Discovery 3 or Discovery 4 tailgate.

Its installation is simple and by reading this guide can be done by anyone, without special skills, and with minimal tools, you just need a little patience!



PLEASE READ THESE INSTRUCTIONS COMPLETELY BEFORE STARTING THE INSTALLATION

Take the time to read and understand this short manual so you can install the product correctly.

These symbols will highlight any special points and meanings to you:



Indicates an important piece of information that should not be underestimated for the correct installation of the product.



Indicates an important safety warning and failure to follow the directions may result in damage to the vehicle.

1. Kit contents

Cod	Description	Image
A	Upper brackets (x2)	
B	Lower brackets (x2)	
C	Big panel (x1)	
D	Central panel (x1)	
E	Small panel (x1)	
F	Plates for magnetic devices (x3)	
Fittings: <ul style="list-style-type: none"> • M6x12 Hex head bolts (x4) • M6x14 Hex head bolts (x4) • M6x12 Button head bolts (x14) • M6 Self-locking nuts (x10) • M6 standard washers (x4) • M6 wide washers (x8) 		

2. Compatibility:

- Land Rover Discovery 3/LR3 – L319
- Land Rover Discovery 4/LR4 – L319

3. Tools needed:

- Phillips screwdriver
- Trim removal tool
- Grave
- Drill
 - 4mm bit
 - 7mm bit
- 2x 10mm spanners
- Paper tape
- Scissor and/or cutter
- 4mm Allen key

4. Installation:

4.1. Lower and upper trims removal:

Using the Phillips screwdriver, remove the lower liner screw shown in the left photo; then, manually or using trim removal tool, remove the latch frame by pulling it toward you:



At this point, bottom trim is held in place only by plastic clips. Grasp it with your hands and pull it toward you to remove it completely:



Upper trim has no screws; it is held in place by plastic clips only. With the help of the lever grasp it with your hands and pull it toward you:

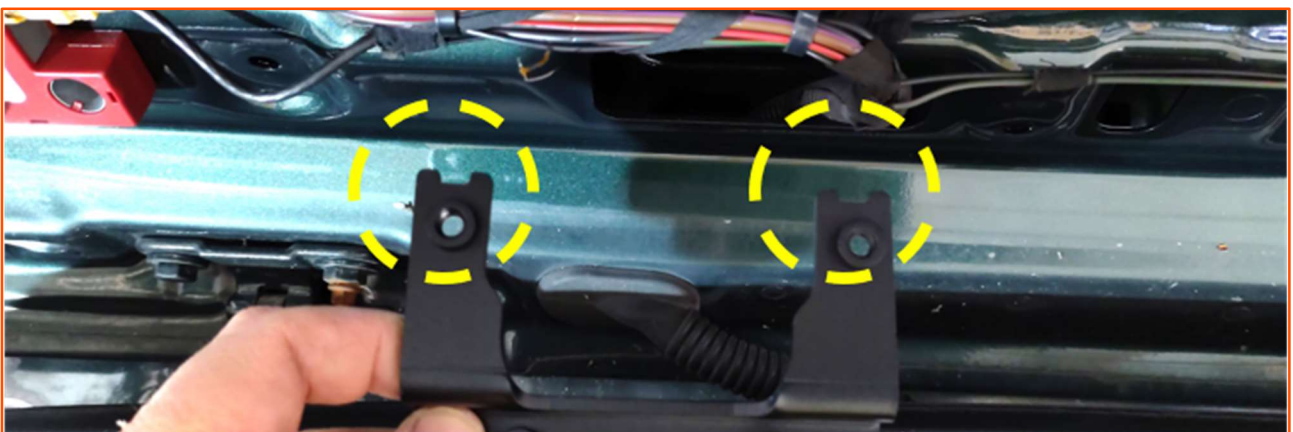


4.2. "A" upper brackets installation

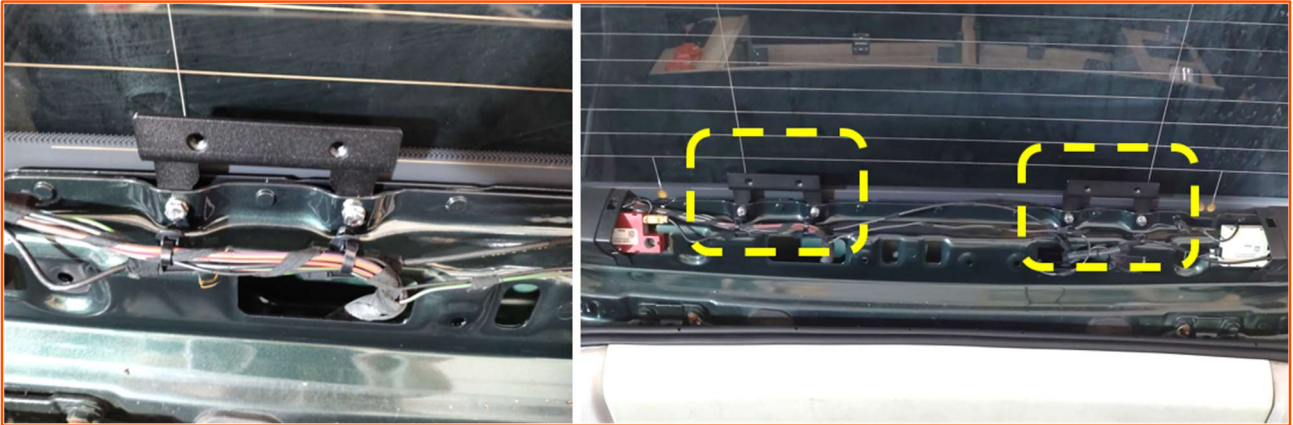
Remove cable clips shown in the photos from the holes:



Looking at the car from behind, bracket "A" with the details highlighted in the yellow circles should be installed in the right side



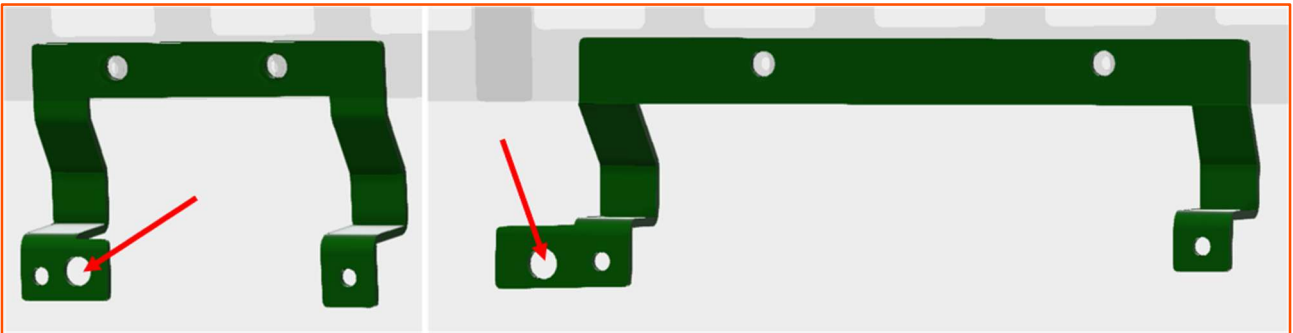
Using M6x12 hex head bolts and small washers, install both upper brackets as shown:



4.3. "B" lower brackets installation

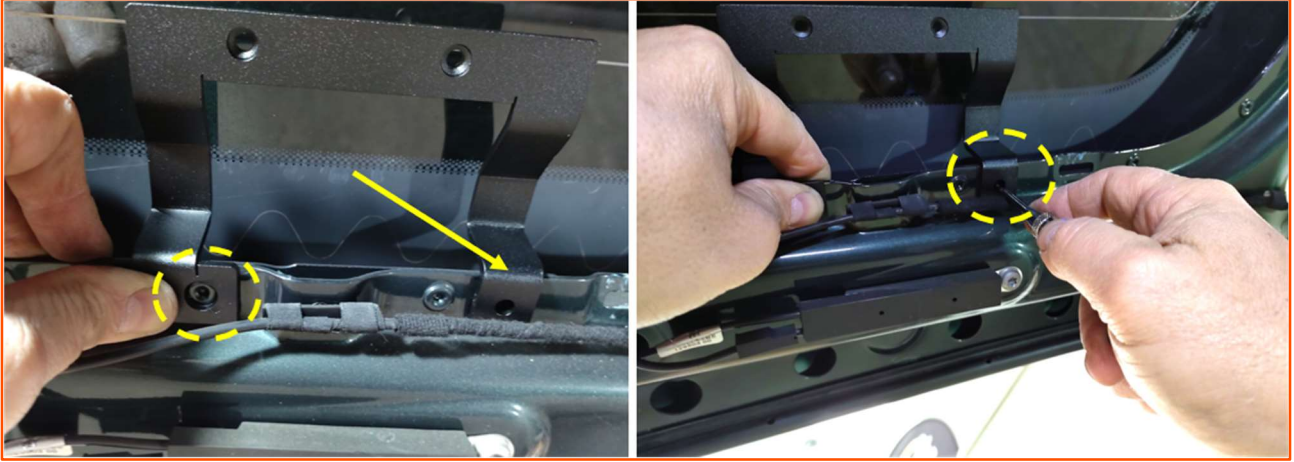


The lower brackets are provided with jigs. To determine where to drill, carefully place the template hole indicated by the red arrows, into the rivet already in the car of which an example shown by the yellow arrow



NARROW "B" BRACKET:

Place the bracket template on the **second rivet starting from the left** and, making sure that the part highlighted by the arrow rests on the tailgate frame, mark the position of the two holes:



You'll drill the holes with the drill bit in the direction of the tailgate glass. Take appropriate precautions so that the drill bit does not hit the glass. In our case, as shown by the photos, we used a simple piece of wood

Using the 4mm bit first, then the 7mm bit, drill the holes in which to insert the M6x14 hex head screws. Install the bracket using the self-locking nuts and the two 10mm spanners:



WIDE BRACKET:

Place the bracket template on the **fourth rivet starting from the right** and, making sure that the part highlighted by the arrow rests on the tailgate frame mark the position of the two holes:



Drill holes as explained in the previous step and install the bracket using the remaining M6x14 hex head screws and self-locking nuts:



4.4. Upper and lower trim reinstalation:

Put a few paper tape on the trims, place it near the brackets, and mark where the cuts are to be made:



Using the scissors and/or cutter, cut the trims to a depth of about 2cm:

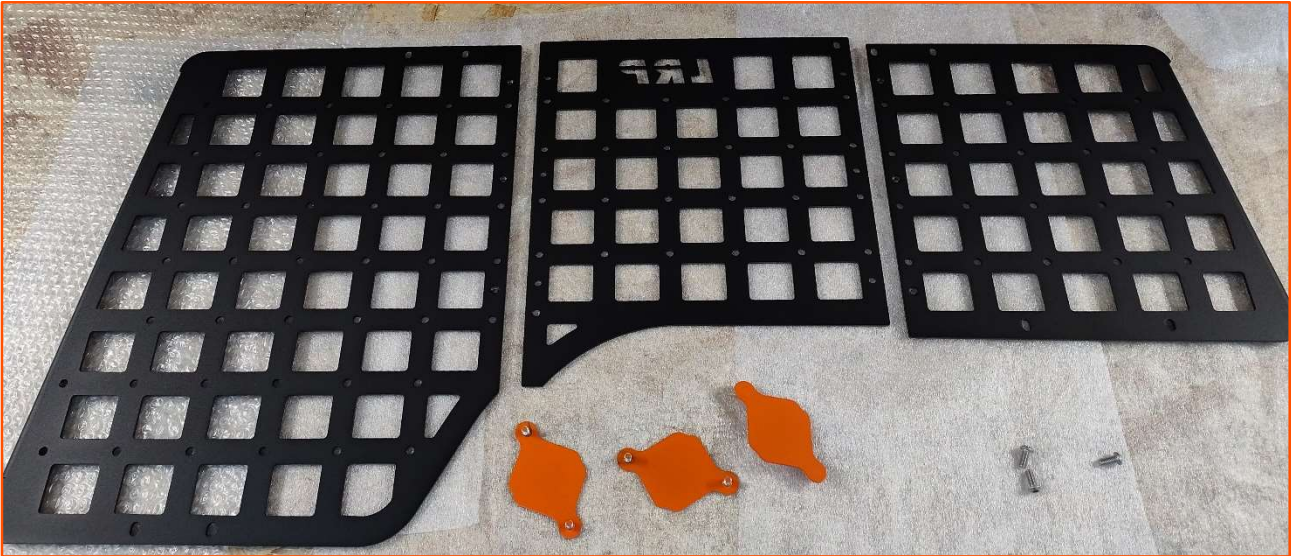


Reinstall both trims by following the reverse procedure:



4.5. Tactical panel assembly:

Assemble the panel using M6x12 button head screws:



Position the magnetic device support plates "F" in according to your needs and screw them with M6 self-locking nuts:



Screw the panel to the brackets, using the remaining button head screws and wide washers:



Good job, the installation is completed!



If needed, they can be purchased at www.landroverpassion.com as optional extras:

- additional support plates for magnetic devices
- reinforced gas spring kit (700N)
- Quick Fist clamp kit